




WELCOME TO 322 CAPITOLA VILLAGE BEACH HOUSE


Check in: Check in time is 4 pm at Kendall & Potter's office located at.
522 Capitola Ave, Capitola, CA 95010

Parking: Permit parking for 1 car provided in property. You can park in front of the home if there is a space available with the parking permit.

 Village parking permits are valid in two-hour zones, three-hour zones and pay to park spaces only. Green zone parking is permitted for a maximum of 24 minutes. Permit is not valid in the following area: Capitola Ave (between Stockton and Monterey Ave), the 24 metered parking spaces diagonal to the seawall on the ocean side of the Esplanade between Zelda's deck and the entrance to Esplanade Park and the lower City Hall Parking lot.

 Village parking permit holders may park in the Upper/Lower Beach and Village Parking lots and are not required to pay at the pay station. It is illegal to back into any space in the Upper/Lower Beach and Village parking lots or any diagonal space. Front end of vehicle must be within 6 inches of the curb. (Ord. 10.36.220)

 No Vehicle longer than 20 feet may be parked in a regular space in the Upper/Lower Beach and Village parking lots. Week day RV/Bus parking permits are available for purchase at the Capitola Police Department during regular business hours.

 10.36.070 Storage of Vehicles on Public Streets: No person who own or has possession, custody or control of any vehicle shall park such vehicle upon any street or alley for more than a consecutive period of 72 hours. Any vehicles parked or stored in violation of this section may be removed by the police department to the extent authorized by Vehicle Code Section 22651 provided the procedures set forth in Vehicle Code Section 22850 are followed (Ord. 931 9.4, 1963)

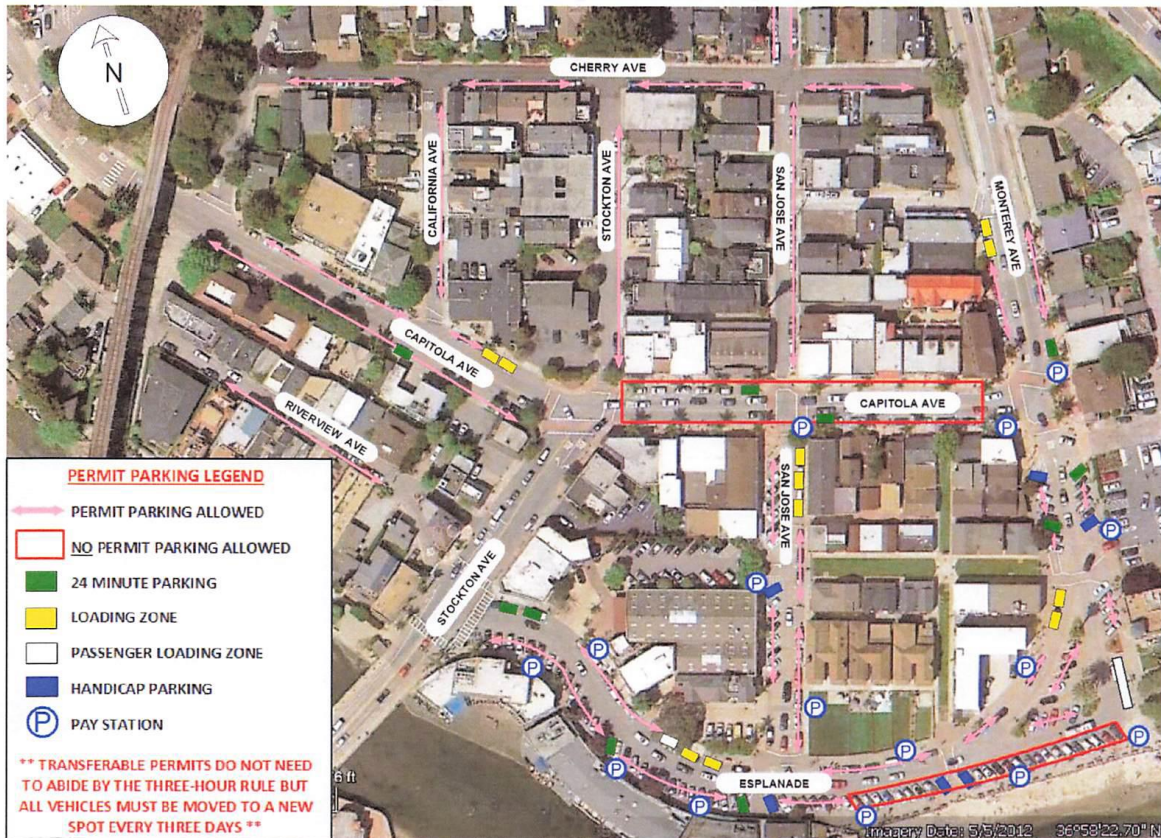


Additional parking is at the Upper/Lower Parking lots by the Capitola Police Station. Fee is \$6 per day between 8 am and 8 pm. Parking overnight is allowed, but make sure you pay before 8 am the next morning and move car after 3 days. You can pay at any pay station available; you will just need to remember your space number.

WELCOME TO 322 CAPITOLA VILLAGE BEACH HOUSE



City of Capitola Residential Village Parking Permit Map and Guidelines



- Village parking permits are valid in two-hour zones, three-hour zones and pay to park spaces only. Green Zone parking is permitted for a maximum of 24 minutes. Village parking permits are not valid in the following areas: Capitola Avenue (between Stockton and Monterey Avenues), the 24 parking spaces diagonal to the seawall on the ocean side of the Esplanade between Zelda's deck and the entrance to Esplanade Park and the City Hall Parking Lot.
- If, by on-site inspection, it is determined you have adequate off-street parking, your parking permit will be revoked or denied.
- Village parking permit holders may park in the Upper/Lower Beach and Village Parking Lots and are not required to pay at the pay station. It is illegal to back into any space in the Upper/Lower Beach and Village Parking Lots or any diagonal space. Front end of vehicle must be within 6 inches of the curb. (Ord. 10.36.220)
- No vehicle longer than 20 feet may be parked in a regular space in the Upper/Lower Beach Parking Lots. Week day only RV/ Bus parking permits are available for purchase at the police department during regular business hours.
- 10.36.070 Storage of Vehicles on Public Streets: No person who owns or has possession, custody or control of any vehicle shall park such vehicle upon any street or alley for more than a consecutive period of seventy-two hours. Any vehicles parked or stored in violation of this section may be removed by the police department to the extent authorized by Vehicle Code Section 22651 provided the procedures set forth in Vehicle Code Section 22850 are followed. (Ord. 931 § 1, 2008; Ord. 841 § 1, 2002; Ord. 663, 1988; Ord. 204 § 9.4, 1963)
- The Chief of Police may cancel any permit which is reasonably determined to have been used contrary to the provisions of Capitola City Ordinance 10.36.010 with the knowledge of or due to the negligence of the permit holder. Seven (7) days prior to the cancellation of a permit, the Chief of Police will send a notice of intention to cancel the permit to the residence noted on the permit application.

WELCOME TO 322 CAPITOLA VILLAGE BEACH HOUSE

Hot tub: Service is on Thursdays between 11am-1pm. Spa company has access to the house and cannot be turned away for any reason. Please rinse off before using the spa and be sure to unlatch 2 hooks to open hot tub cover. Kindly cover the hot tub when not in use to keep water temperature. Hot tub filter comes on for 2 hours twice a day.

BBQ & Front Porch Firepit: These use natural gas so no need for propane. For the Front Porch Firepit –

- Left button push in and hold for 30 seconds.
- Push ignitor button until lights
- Hold the left button for another 15 seconds (when pushing, release and turn to the left)
- Turn left knob to the left and then adjust to the level of flame you want.

Drapes: Drapes are electric, and controls are on the wall.

Stove: The Stove is an induction stove. It will not heat up until the induction pan is on the stove.

TV: The TV are smart downstairs and has Charter Cable in the upstairs living room.

CHECK OUT IS AT 10 AM - Check out procedures:

- Please leave the property in good condition.
- Please wash dishes and put them away.
- Please empty all trash from home and put in correct bins.
- Please check the property for personal belongings.
- Please turn off the lights, thermostat, and appliances.
- Please lock the windows and doors.
- Please note there will be extra charge for any excessive cleaning, carpet cleaning and excessive trash pick-up.

PLEASE RETURN THE PERMIT IN THE BOX PROVIDED... THERE IS \$100.00 FINE FOR NOT RETURNING THE PERMIT. ALL KEYS NEED TO BE BROUGHT BACK TO KENDALL & POTTER PROPERTY MANAGEMENT, INC.

Thank you for visiting us 322 Capitola Village Beach House
Please contact our office at (831) 477-7930