

## **Welcome to Capitola Venetian #1 Grotta Del Mare**

### **We are happy to have you as our guest!**

---

For your well-being, this beach house has been thoroughly cleaned, sanitized, and disinfected according to CDC recommendations. All linens, towels and bathmats have been laundered prior to your arrival.

**TV and Fireplace:** Refer to the instructions in the media closet for each TV in the house and using the fireplace.

**Window Coverings in Living Room:** To open you must push together like you are closing them and pull in opposite directions. To close just pull together till it locks.

**Master Bathroom Lights:** There are (2) two switches for the bathroom lights. There is a square and regular light switch. For a timer light hit the square switch for a regular untimed light turn on the regular light switch.

**Hot Water:** Be aware that there is only one boiler. If you do dishes, run the dishwasher, and then shower the hot water might be gone. Be aware of the limited hot water since there is only one boiler.

**Garbage Pickup:** Garbage cans are in the walkway between units 5 and 6. The can is labeled #1. Empty all trash and place in the outside bin Trash is picked up on MONDAY.

**Cleaning:** Please wash and put away all dishes. Empty refrigerator/freezer of all personal food/drinks, check all drawers/closets for personal items, turn off all thermostats, lights, and appliances. Close and lock all windows and doors.

**Linens:** No need to wash linens. Leave beds unmade, please towels in the bathrooms. Check Property for any Personal belongings upon departure.



**Parking:** Permit parking for (1) ONE car provided in property. You can park at the entrance to the Hotel/Wharf to unload quickly and then move car to a parking space.

## Welcome to Capitola Venetian #1 Grotta Del Mare We are happy to have you as our guest!

---

- 🚗 Village parking permits are valid in two-hour zones, three-hour zones and pay to park spaces only. Green zone parking is permitted for a maximum of 24 minutes. Permit is not valid in the following area: Capitola Ave (between Stockton and Monterey Ave), the 24 hr. metered parking spaces diagonal to the seawall on the ocean side of the Esplanade between Zelda's deck and the entrance to Esplanade Park and the lower City Hall Parking lot.
- 🚗 Village parking permit holders may park in the Upper/Lower Beach and Village Parking lots and are not required to pay at the pay station. It is illegal to back into any space in the Upper/Lower Beach and Village parking lots or any diagonal space. Front end of vehicle must be within 6 inches of the curb. (Ord. 10.36.220)
- 🚗 No Vehicle longer than 20 feet may be parked in a regular space in the Upper/Lower Beach and Village parking lots. Week day RV/Bus parking permits are available for purchase at the Capitola Police Department during regular business hours.
- 🚗 10.36.070 Storage of Vehicles on Public Streets: No person who own or has possession, custody or control of any vehicle shall park such vehicle upon any street or alley for more than a consecutive period of 72 hours. Any vehicles parked or stored in violation of this section may be removed by the police department to the extent authorized by Vehicle Code Section 22651 provided the procedures set forth in Vehicle Code Section 22850 are followed (Ord. 931 9.4, 1963)

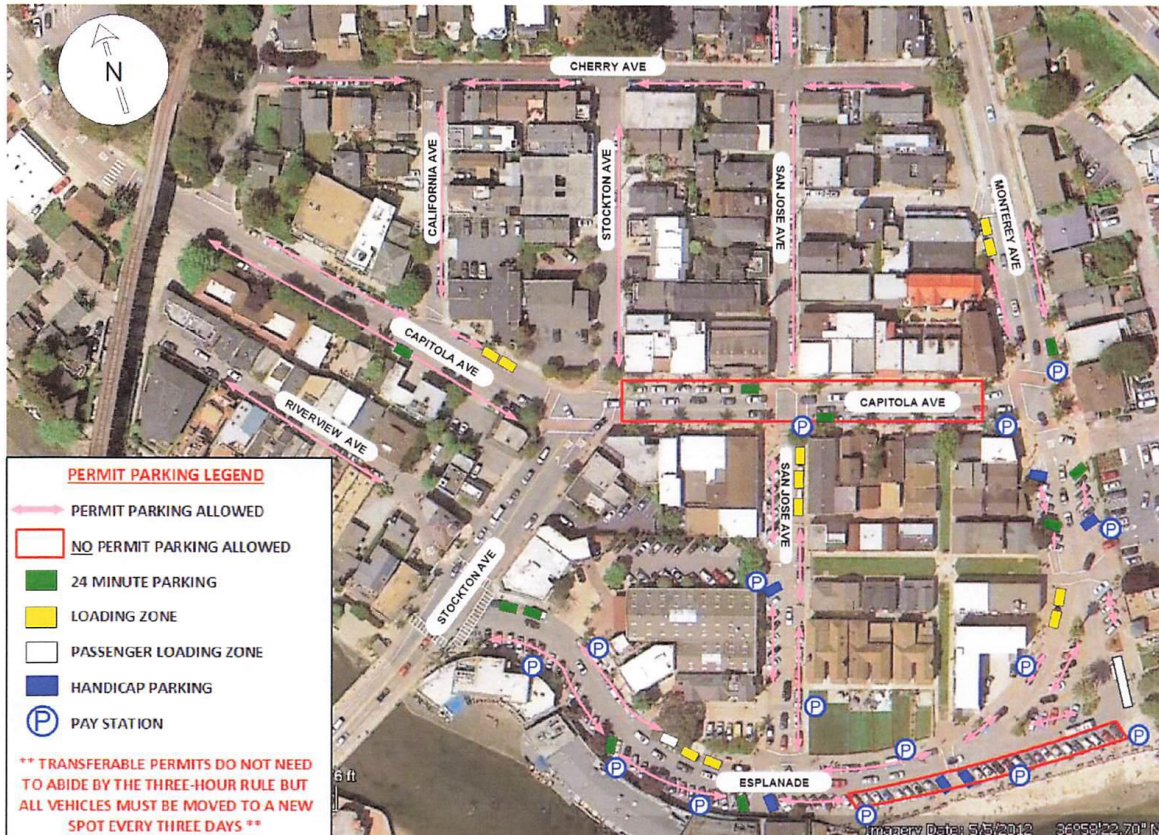


You **CANNOT** Park in the Venetian Hotel Parking Lot. Additional parking is at the Upper/Lower Parking lots by the Capitola Police Station. Fee is \$6 per day between 8 am and 8 pm. Parking overnight is allowed, but make sure you pay before 8 am the next morning and move car after 3 days. You can pay at any pay station available; you will just need to remember your space number.

Welcome to Capitola Venetian #1 Grotta Del Mare  
We are happy to have you as our guest!



## City of Capitola Residential Village Parking Permit Map and Guidelines



- Village parking permits are valid in two-hour zones, three-hour zones and pay to park spaces only. Green Zone parking is permitted for a maximum of 24 minutes. Village parking permits are not valid in the following areas: Capitola Avenue (between Stockton and Monterey Avenues), the 24 parking spaces diagonal to the seawall on the ocean side of the Esplanade between Zelda's deck and the entrance to Esplanade Park and the City Hall Parking Lot.
- If, by on-site inspection, it is determined you have adequate off-street parking, your parking permit will be revoked or denied.
- Village parking permit holders may park in the Upper/Lower Beach and Village Parking Lots and are not required to pay at the pay station. It is illegal to back into any space in the Upper/Lower Beach and Village Parking Lots or any diagonal space. Front end of vehicle must be within 6 inches of the curb. (Ord. 10.36.220)
- No vehicle longer than 20 feet may be parked in a regular space in the Upper/Lower Beach Parking Lots. Week day only RV/ Bus parking permits are available for purchase at the police department during regular business hours.
- 10.36.070 Storage of Vehicles on Public Streets: No person who owns or has possession, custody or control of any vehicle shall park such vehicle upon any street or alley for more than a consecutive period of seventy-two hours. Any vehicles parked or stored in violation of this section may be removed by the police department to the extent authorized by Vehicle Code Section 22651 provided the procedures set forth in Vehicle Code Section 22850 are followed. (Ord. 931 § 1, 2008; Ord. 841 § 1, 2002; Ord. 663, 1988; Ord. 204 § 9.4, 1963)
- The Chief of Police may cancel any permit which is reasonably determined to have been used contrary to the provisions of Capitola City Ordinance 10.36.010 with the knowledge of or due to the negligence of the permit holder. Seven (7) days prior to the cancellation of a permit, the Chief of Police will send a notice of intention to cancel the permit to the residence noted on the permit application.

**Welcome to Capitola Venetian #1 Grotta Del Mare**  
**We are happy to have you as our guest!**

---

**Check out procedures:**

- Please leave the property in good condition.
- Please wash dishes and put them away.
- Please empty all trash from home and put in correct bins.
- Please check the property for personal belongings.
- Please turn off the lights, thermostat, and appliances.
- Please lock the windows and doors.
- Please note there will be extra charge for any excessive cleaning, carpet cleaning and excessive trash pick-up.

**Check out is at 10:00 AM. PLEASE RETURN THE PERMIT IN THE BOX PROVIDED... THERE IS \$100.00 FINE FOR NOT RETURNING THE PERMIT.**

**KENDALL & POTTER PROPERTY MANAGEMENT, INC.**  
**(800) 386-6826 OR (831) 477-7930**

