

# WHISTLER VALLEY TRAIL MAP

## CAUTION, HAVE FUN

### THIS IS A TWO-WAY, MULTI-USE TRAIL

Respect other users. Share the trail. Keep right. Pass on the left. Class 1 electric assist e-bikes to 32 km/hr. maximum permitted, all others are not.

**IN CASE OF EMERGENCY: PHONE 911**

### DOGS

Dogs must be leashed unless in a dog off-leash park. Dog owners are required to pick up and properly dispose of dog waste. Bag it and bin it.  
Learn more at [whistler.ca/dogs](http://whistler.ca/dogs)

### FIRESMART

Whistler is surrounded by beautiful forests. Enjoy all they have to offer but know that Whistler is a high-risk wildfire area. Do your part to prevent wildfires. Check fire danger ratings, follow campfire bans, and extinguish all smoking materials. To report a wildfire or irresponsible behaviour call \*5555 from a cell phone.  
Learn more at [whistler.ca/fire](http://whistler.ca/fire) or call 1.888.3.FOREST

### BEAR SAFETY

Please help keep Whistler safe for bears and people.

- Never approach a bear.
- Never run away from a bear. Stay calm & back away slowly.
- Ensure bears never have access to food or garbage.
- Use bear-proof garbage bins.
- Carry out ALL garbage when using parks and trails.
- Don't leave food or food packaging in vehicles.
- Keep dogs on-leash.

Learn more at [whistler.ca/bears](http://whistler.ca/bears)

### PARK SHUTTLES AND WHISTLER TRANSIT

Free Summer Park Shuttle to get to Rainbow Park, Meadow Park, Lost Lake Beach and Rainbow Trail Head. Shuttle operates on weekends and statutory holidays June 30th to September 6th. Pick up at Gondola Transit Exchange and Blackcomb Way next to Olympic Plaza.

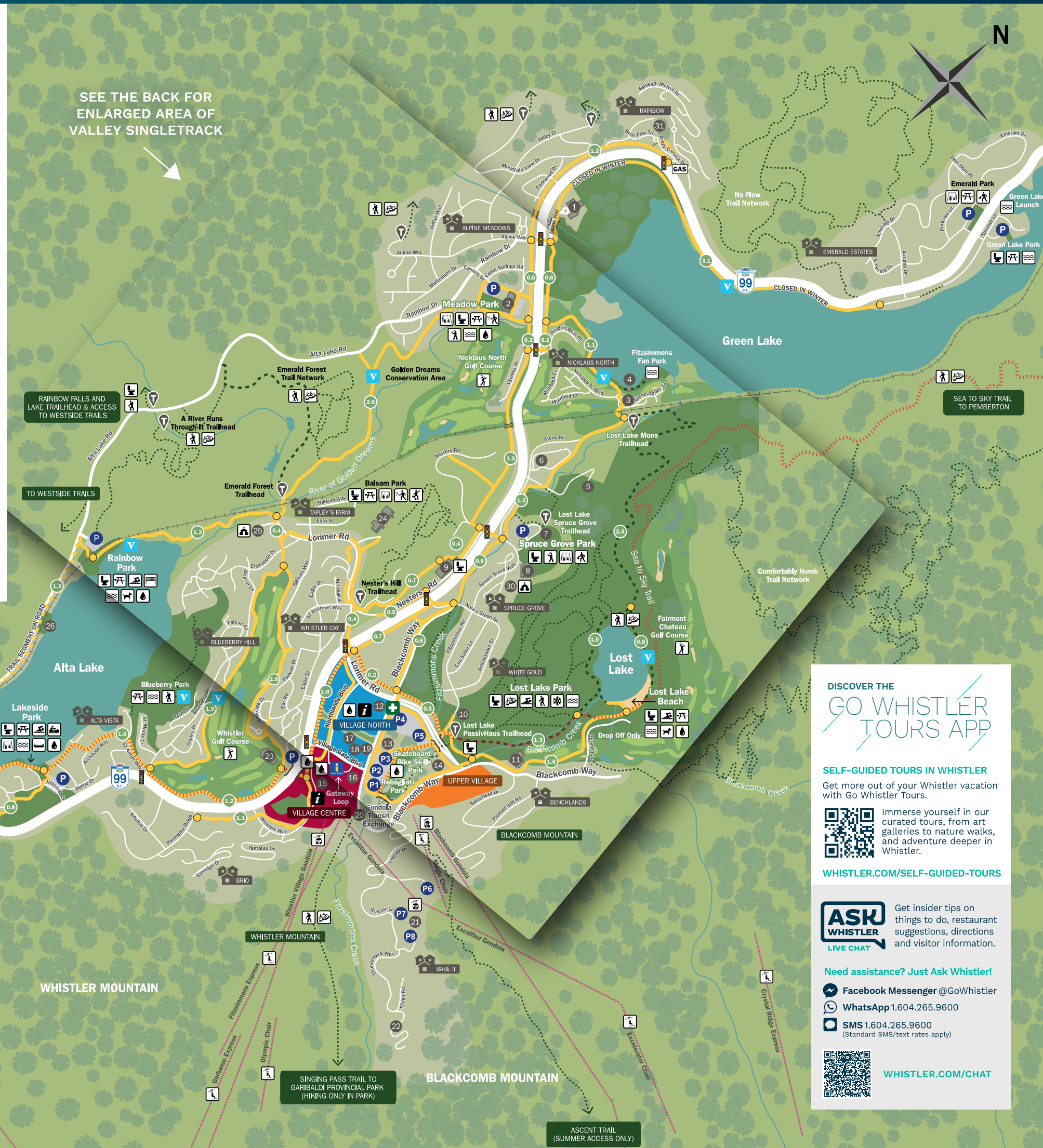
The Whistler Transit System services all neighbourhoods in Whistler with free service within Whistler Village, the Upper Village, and Benchlands. All other neighbourhoods are accessed by a fare system and route through Gondola Transit Exchange. All buses are equipped with bike racks (capacity two per bus). Learn more at [bctransit.com/whistler](http://bctransit.com/whistler) or by calling 604.932.4020.

## LEGEND

- ROADWAY
- GRAVEL ROAD
- PAVED VALLEY TRAIL
- VALLEY TRAIL ON ROAD
- WIDE GRAVEL TRAIL
- OTHER TRAILS
- SEA TO SKY TRAIL
- GONDOLA / SKI LIFT
- RIVERS AND CREEKS
- RAILWAY
- NEIGHBOURHOOD
- DISTANCE IN KILOMETRES
- TRAIL HEAD
- PARKING AREA
- EMERGENCY HEALTH SERVICES
- PUBLIC WASHROOMS
- VISITOR CENTRE
- VILLAGE HOST
- VIEWPOINT
- PICNIC AREA
- GOLF COURSE
- WINTER ACTIVITIES
- HIKING
- PLAYGROUND
- BIKING
- MOUNTAIN BIKING
- CANOEING
- SWIMMING
- SOCCER
- TENNIS
- BASEBALL
- BASKETBALL
- VOLLEYBALL
- LAKE, RIVER ACCESS
- WATERCRAFT RENTALS
- DOG OFF-LEASH PARK
- GONDOLA
- SKI LIFT
- RAILWAY
- CHURCH
- WATER BOTTLE FILL STATION  
Only available in summer

## MAP DIRECTORY

- ### INFORMATION
- 16 Whistler Visitor Centre
- ### EMERGENCY SERVICES
- 12 Whistler Health Care Centre
- ### EDUCATION CENTRES
- 24 Myrtle Phillip Community School
  - 28 Spring Creek Community School
  - 1 Whistler Secondary Community School
- ### RECREATIONAL & CULTURAL CENTRES
- 13 Audain Art Museum
  - 11 Chateau Whistler Golf Club
  - 21 bubly™ Tube Park
  - 4 Float Plane Dock
  - 10 Lost Lake PassivHaus
  - 19 Maury Young Arts Centre
  - 2 Meadow Park Sports Centre
  - 3 Nicklaus North Golf Clubhouse
  - 26 Point Artist Run Centre
  - 6 Riverside Parkbridge Campground
  - 14 Squamish Lil'wat Cultural Centre
  - 8 Spruce Grove Field House
  - 29 Whistler Athlete's Centre
  - 15 Whistler Conference Centre
  - 7 Whistler Disc Golf Course
  - 23 Whistler Golf Course Clubhouse
  - 17 Whistler Museum
  - 18 Whistler Public Library
  - 22 Whistler Sliding Centre
- ### LANDMARKS
- 5 Scandinave Spa
  - 9 Nesters Commercial Area
  - 20 Gondola Transit Exchange
  - 25 Whistler Catholic Church
  - 30 Whistler Community Church
  - 27 Train Station
  - 31 Rainbow Commercial Area



DISCOVER THE  
**GO WHISTLER TOURS APP**

SELF-GUIDED TOURS IN WHISTLER  
Get more out of your Whistler vacation with Go Whistler Tours.

Immerse yourself in our curated tours, from art galleries to nature walks, and adventure deeper in Whistler.

[WHISTLER.COM/SELF-GUIDED-TOURS](http://WHISTLER.COM/SELF-GUIDED-TOURS)

**ASK WHISTLER** LIVE CHAT  
Get insider tips on things to do, restaurant suggestions, directions and visitor information.

Need assistance? Just Ask Whistler!

Facebook Messenger @GoWhistler

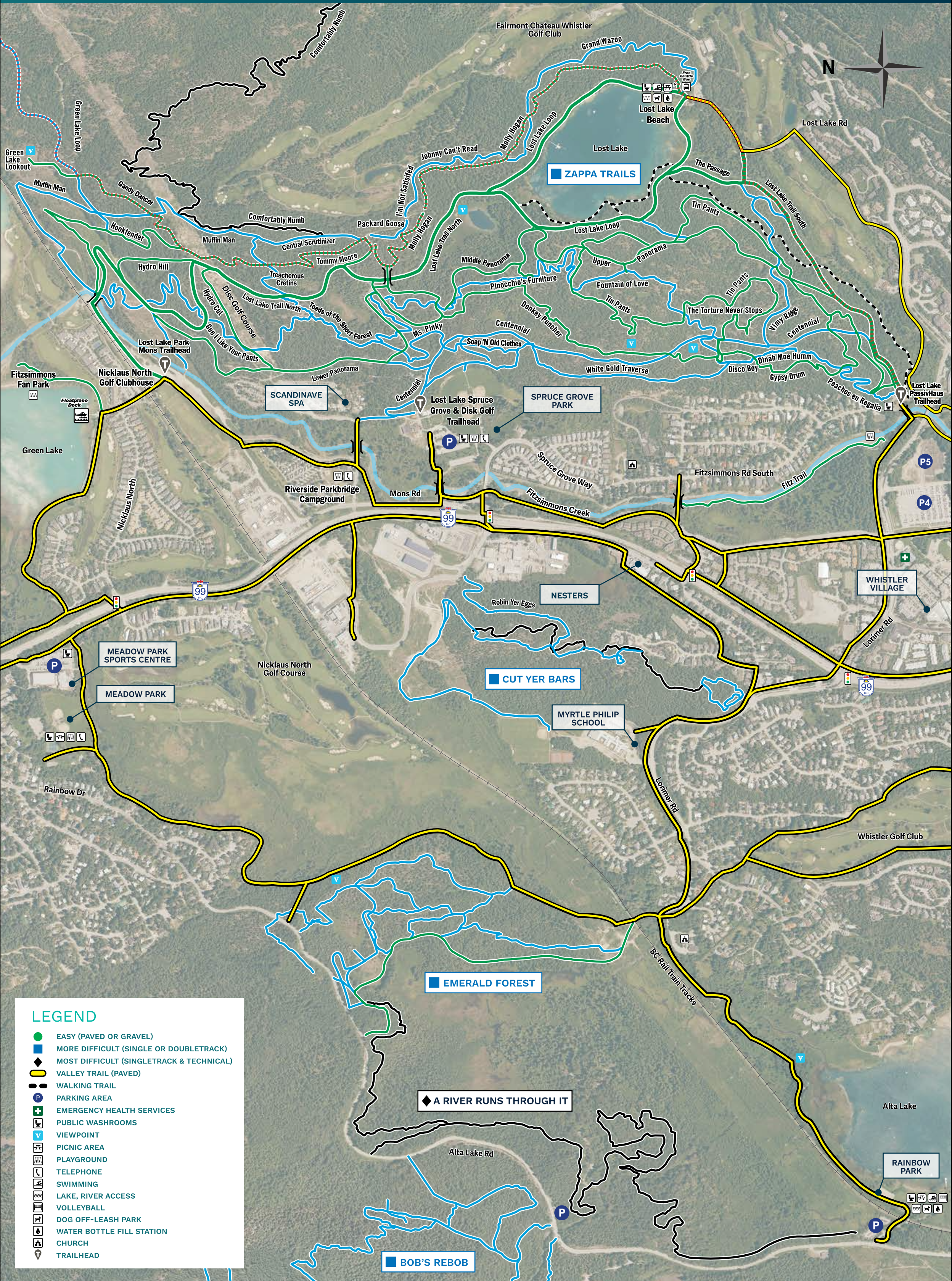
WhatsApp 1.604.265.9600

SMS 1.604.265.9600 (Standard SMS/text rates apply)

[WHISTLER.COM/CHAT](http://WHISTLER.COM/CHAT)

**RECYCLED**  
Paper made from recycled material  
FSC® C014956  
Tourism Whistler is pleased to produce this map as a completely Carbon Neutral print project through Hemlock Printers and Ostrom Climate Solutions.

# WHISTLER VALLEY SINGLETRACK



## LEGEND

- EASY (PAVED OR GRAVEL)
- MORE DIFFICULT (SINGLE OR DOUBLETACK)
- ◆ MOST DIFFICULT (SINGLETRACK & TECHNICAL)
- VALLEY TRAIL (PAVED)
- WALKING TRAIL
- P PARKING AREA
- + EMERGENCY HEALTH SERVICES
- ♿ PUBLIC WASHROOMS
- v VIEWPOINT
- ☺ PICNIC AREA
- 🎡 PLAYGROUND
- ☎ TELEPHONE
- 🏊 SWIMMING
- 🌊 LAKE, RIVER ACCESS
- 🏐 VOLLEYBALL
- 🐕 DOG OFF-LEASH PARK
- 💧 WATER BOTTLE FILL STATION
- ⛪ CHURCH
- 📍 TRAILHEAD